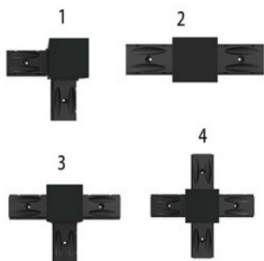


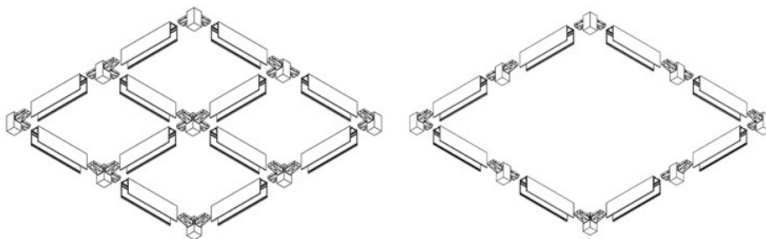
# 48V Track for Sound-Track

## Suspension manual

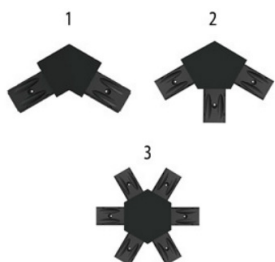
### SQUARE INSTALLATION



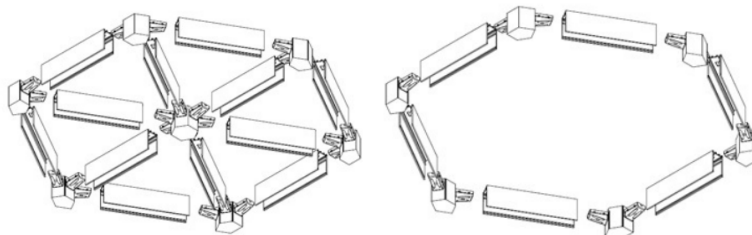
1. Electrical connection 90°
2. Electrical connection
3. Electrical T connection
4. Electrical X connection



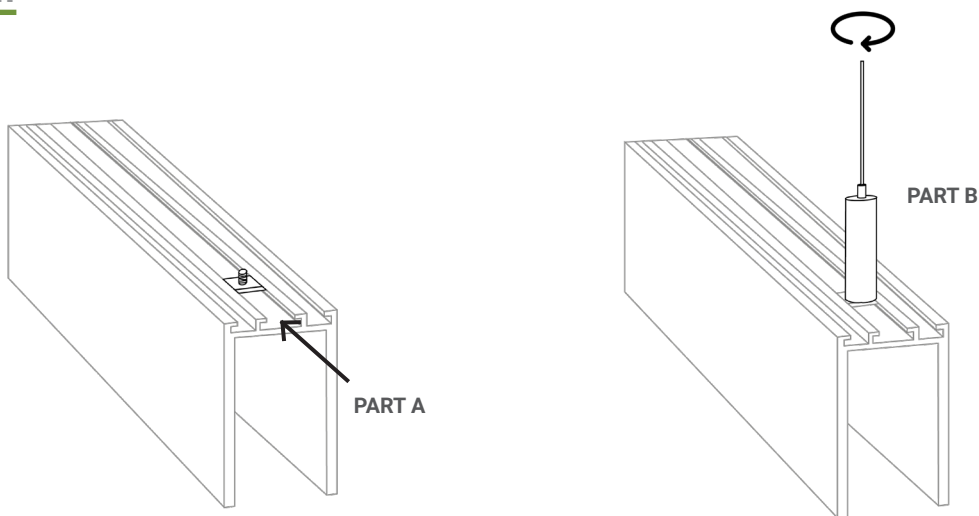
### HEXAGONAL INSTALLATION



1. Electrical connection 120°
2. Electrical connection 2x60°
3. Electrical connection 6x60°



### SUSPENSION KIT

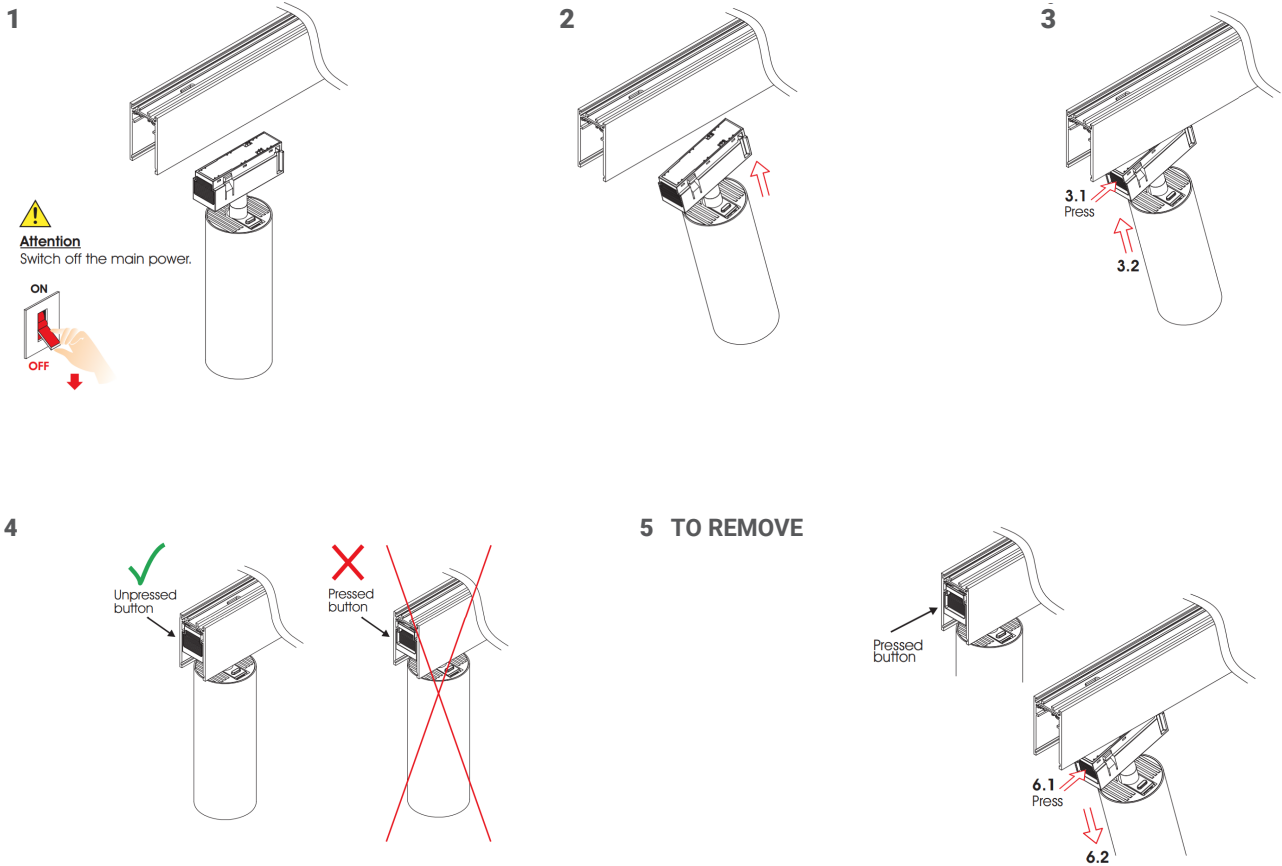


Stoal (Nardo bv) is not responsible for any damage or injury caused by incorrect or improper use of the equipment.  
Stoal (Nardo bv) reserves the right to change or alter any information contained in this manual without prior notice.

Nardo bv / Stoal | [www.stoal.be](http://www.stoal.be) | T +32 (0)51 688 246 | Mail: [info@stoal.be](mailto:info@stoal.be)

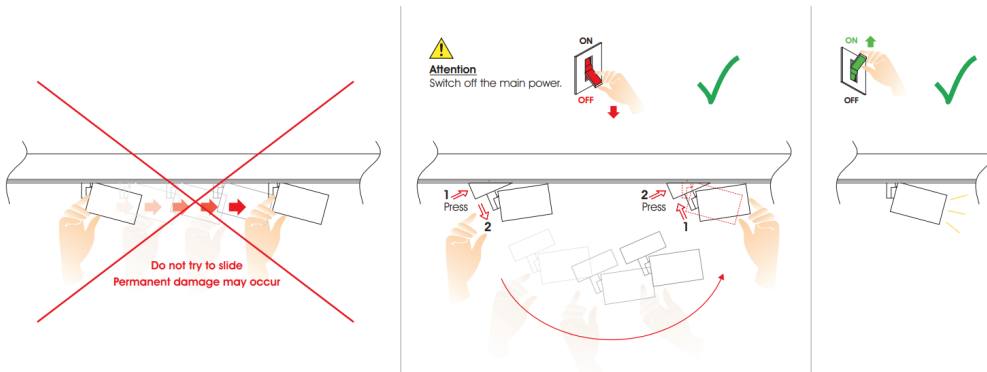
# 48V Track for Sound-Track

## Parts manual



### Warning

Do not move the LED luminaire along the Track for any reason, regardless of whether the power is ON or OFF. To adjust the fixture position, first remove the fixture from the Track and then move it to the new position on the Track. Failure to comply with the above may result in permanent damage to the fixture.



Stoal (Nardo bv) is not responsible for any damage or injury caused by incorrect or improper use of the equipment.  
Stoal (Nardo bv) reserves the right to change or alter any information contained in this manual without prior notice.